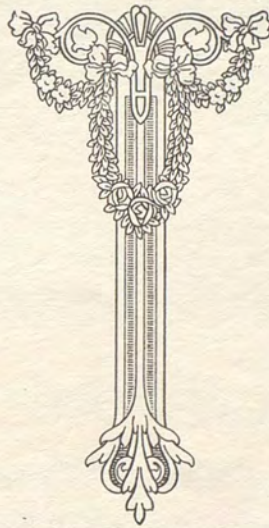


THE  
ROYAL BLUE

1935

A Pictorial Review  
of the School Year



Published By  
THE SENIOR CLASS  
of  
WALLA WALLA HIGH SCHOOL



## FOREWORD

In editing this volume of the Wa-Hi Year Book the staff has endeavored to present picture suggestions of the delights and enthusiasms of the Wa-Hi student life and the organizations of the school year just ended. We have also endeavored to make this book a continuous reminder of the friendship and spirit of co-operation, characteristic of the students of Wa-Hi.

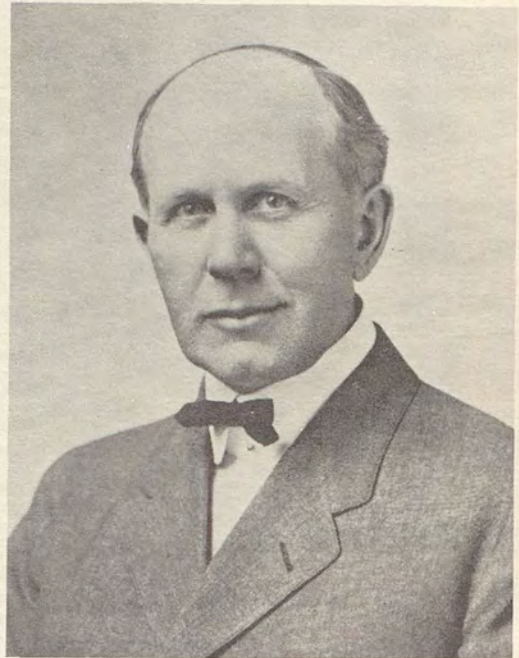


## TO MR. REED

In appreciation of his services, thoughtfulness, and guidance, the class of nineteen hundred and thirty-five dedicate this Year Book.

## ADMINISTRATION

W. M. KERN, Superintendent  
A.B., University of Indiana; A.M., University of  
Indiana, Columbia University



W. A. LACEY, Prinicipal  
A. B., Baker University; M.A., University of  
Kansas



## Principal's Foreword

Of the six millions of young people in the high schools of the United States two hundred forty are represented in this little book. They are a small fraction of the total in our country who are now preparing themselves for the tasks of an increasingly complex life.

A century ago simple instruction served to prepare for a relatively simple environment; next the schools learned well how to teach individual skills and technical processes and a marvelous mechanical world grew almost over night. But social progress and government lagged behind, losing much of the fair-play and integrity they possessed in our earlier history.

The supreme task of today is to rear and instruct a young America, habituated to individual integrity and social justice,—determined to achieve in social regulation what our best thought shows to be possible,—willing to submerge selfish interests in the cause of common welfare,—courageous to choose the best and discard the useless.

Our own section of the country, our own state, provides an opportunity for the future which makes one wish one were among the two hundred forty. Here will come development, sure and soon; here will be chances to build lives rich in activity and service; here will be constructed a state in which the blessings of nature and the works of man will be shared by all in proportion to their deserts and their contributions.

Here may these young people come into the blessings of life in the degree to which they employ their talents in the common cause!



Stanfield



Taggart



Johnson

## SENIOR CLASS OFFICERS

| First Semester      |                     | Second Semester   |
|---------------------|---------------------|-------------------|
| Earl Stanfield..... | President.....      | Earl Stanfield    |
| Murray Taggart..... | Vice-President..... | Helen Louise Hill |
| June Johnson.....   | Secretary.....      | Martha Crawford   |



Stanfield



Hill



Crawford

MARGUERITE ADAMS

Transferred from Redmond Union High School, Redmond, Ore., 6.



WILMA M. AVERILL

Transferred from Elk River, Idaho, 7.

WANDA ADEN

Social Science Club 6-8.



GRACE GERALDINE BAER

El Adrea 7-8.

EDNA ALEXANDER

Social Science Club 2-3; Journal Staff 8; Chorus 1-2.



BOB BAKER

Hi-Y 8; Science Club 7-8; Radio Club 6; Legislative Assembly 4.

BETTY ANNE ALLEN

French Club 6-8; Senior Committees: Costume 8, Commencement 8.



SHIRLEY JEANNE BAKER

Dramatic Club 4-8; Girls' Federation Cabinet 6, 8, Secretary 8; Legislative Assembly 3, 7; Sponsor Co. B 7.

HAROLD V. ARGO

National Honor Society 6-8, President 7, 8; Science Club 4-8, Vice-President 6, 8; Legislative Assembly 1, 7; Yearbook Staff, Assistant Editor 8; Senior Committees: Announcement 7, Property Chairman 8.



GLENA M. BALTEZORE

LeROY A. BASTRON

W. W. Club 4-8; Legislative Assembly 2, 8; Basketball 2-4-6-8.



JOHN J. BETHMAN

Officer's Club 6-8; Science Club 4-8; "Officer 666" 6; Senior Play "Little Women" 8; Capt. Co. A 7, 8; Rifle Team 7, 8.

DONALD BECKEL

F. F. A. 6-8.



MAXINE BILLINGS

Transferred from Washington High School, Portland Oregon, 7; Dramatic Club 8.

JIMMY BENEFIEL

Boys' Classical Club 5-8; Track 8.



WANITA BINDER

Independent Club.

JAKE BENZEL

Chorus 2.



BERNICE BINGMAN

National Honor Society 6-8; Girls' Classical Club 4-8, President 8.

ARTIMESA BERGEVIN

Gimmel Teth 6-8; Girls' Federation Council, Vice-Pres. 7; Legislative Assembly 7; Sponsor Capt. Adj. 7; Senior Committee: Yearbook 8.



BLAINE BISHOP

Officers' Club 8; Agriculture Club 7-8; Baseball 8; Second Lieut. Co. B. 8; Senior Committee, Play Selection 7.

**LEWIS BISHOP**

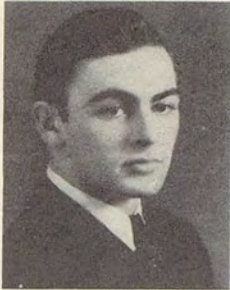
W. W. Club 6-8; Agriculture Club 1-6; Baseball 6; Football 5-7.



**MARJORIE I. BRISTOL**  
Home Economics Club 8.

**TOM BLACKMAN**

W. W. Club 5-8, Vice-President 7, Sec.-Treas. 8; Senate Club 6-7; Science Club 3-4; Legislative Assembly 1, 2, 7; Football 3, 5, 7; Baseball 6, 8; Track 4, 6, 8, Capt. 8; Second Lieut. Co. D 4.



**LAWRENCE BROTHER**  
Officers Club 7-8, Secretary 8; Independent Club 5-6; Legislative Assembly 8; Second Lieut. Co. C 7, 8.

**DOROTHY MAE BOAK**

Transferred from Boise H. S. 7; Home Economics Club 8.



**ALLAN BROUGH**  
Pep Band 6-8.

**MARY E. BONTROP**

National Honor Society 6-8; Dramatic Club 7, 8; Math Club 3-6; Legislative Assembly 2, 3, 4; "The Torchbearers" 5; Senior Committee, Yearbook 8.



**MARTIN BUCHANAN**  
Classical Club 3-8, Treasurer 7.

**FLORENCE BORN**  
French Club 5-7.



**MAXINE ANNA BUCHANAN**  
Classical Club 5-8, Treasurer 7.

## LEONARD BURY

National Honor Society 8;  
French Club 5, 6; Legislative  
Assembly 3, 4.

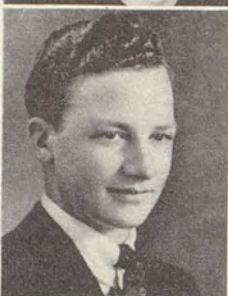


## EVA LUCILE CASEY

El Adrea 1-8, President 8,  
Sec. and Treas. 4, 5; Girls'  
Federation Pres. 7, Council  
1, 2; Friendship 5; Legis-  
lative Assembly 8; "Shirt  
Sleeves" 7; Band Sponsor 7,  
8.

## LYDIA LEE BUTHERUS

German Club 3; Social Sci-  
ence Club 7, 8; Girls' Fed-  
eration, Chairman of Fi-  
nance 7, Council 1; Editorial  
Staff, Journal, 8.



## JERRY CASSEY

Senate Club 3-8; Legislative  
Assembly 5-6; Track 8; Sen-  
ior Committee, Engraving 8.

## MILDRED VIRGINIA BYBEE

El Adrea 3-8; Girls' Federa-  
tion Cabinet 7, Council 4, 5;  
Legislative Assembly 8.



## JANET E. CHASE

## HOWARD I. CAMERON

Science Club 7-8.



## JEAN CHURCH

National Honor Society 7-8;  
Gimmel Teth 3-8, Vice-Pres.  
7; Girls' Federation, Secre-  
tary 5, Treasurer 7; Vice-  
Pres. 6, President of Council  
8; Legislative Assembly  
2, 5, 6; "Shirt Sleeves" 7;  
Journal Staff 8; Chemistry  
Team 6.

## DORRIS E. CAMPBELL

National Honor Society 6-8;  
Math Club 3-8; Chemistry  
Team 6.



## MARGUERITE CLARK

FRANKLIN F. CLINE

Senate Club 7-8; Officers' Club 5-8; Legislative Assembly 3, 4; Captain 7.



MAXINE COYLE

Home Economics Club 7; Legislative Assembly 1, 7.

RICHARD W. CLODIUS

Hi-Y 6-7; Math Club 3-4; Classical Club 3-8; Vice-Pres. 4, 5; Sec.-Treas. 6; Legislative Assembly 3, 4, 6; "Torch Bearers" 5; Eh Kah Nam 8; Extemp. Speaking 8.



MARTHA CRAWFORD

Gimmel Teth 1-8; Secretary 3; Treasurer 8; Classical Club 2, 3; Girls' Federation Cabinet 1, 2, 5, 6, 7; Legislative Assembly 1, 2; Band Sponsor 6, 8; Northwest H. S. Orchestra 6, 8.

DANA COLEMAN

National Honor Society 7-8; El Adrea 1-8; Sec.-Treas. 4, 7; Pres. and Vice-Pres. 5, 8; Girls' Federation: President Council 7, Cabinet 8; Pres. Tri-State League 8; "Shirt Sleeves" 7; Pullman Conference 8.



WILLIAM CREEK

Agriculture Club 1-8.

MADELINE COOKERLY

National Honor Society 6-8; Treasurer 8; Math Club 3-8; Sec.-Treas. 8; Legislative Assembly 5; Senior Play, "Little Women" 8; Senior Committee, Commencement Chairman 8.



MARIE CUNDIFF

Home Economics Club 8.

DOROTHY R. COULTON

El Adrea 3-7; President 6; Dramatic Club 1-2; Girls' Cabinet 7; Legislative Assembly 1, 3; "What Do You Think" 4; "Shirt Sleeves" 6.



DONALD CUSHMAN

Football 3-8.

ROLLAND DANIELS

Math Club 8; Legislative Assembly 8; R. O. T. C. Band 1, 3, 5, 7; Orchestra 7, 8.



ALVIN LeROY ADCOCK

Dramatic Club 5-8, Secretary 8; Legislative Assembly 3-5; Track 4, 6; Captain Co. C 7; Captain Adjutant 8; Rifle Team; Chorus 8.

CHARLES DAVIS



CAMILLA DOTSON

Classical Club 5-6.

WILLIAM DAVIS

Dramatic Club 3-7; All Northwest Music Contest 8; Operetta 4-6; Senior Committee Commencement 8.



KARL DRESSEN

Officers Club 5-8; Military, Captain Company C 8.

DOROTHY DEARE

Dramatic Club 3-8; Legislative Assembly 2, 4; Sponsor Co. C. 8.



EUGENE DRIFTMEYER

Hi-Y Club 5-8; Classical Club 4-5; Senate Club 5-8; Treasurer of Student Body 7-8; Baseball 6, 8.

BOB DICKEY

Officers Club 5-8, Sec.-Treasurer 7, President 8; Legislative Assembly 4; Military, Second Lieut. 6, Captain 7, Major 8.



JAMES EAGLESON

Hi-Y 3-8; Math Club 3-8, President 8, Military, Second Lieut. 8; Yearbook Staff 8; Senior Committee 8.



BERTHA K. EFFINGER



REMO P. FAUSTI  
W. W. Club 7-8; Hi-Y 5-8,  
President 8; Science Club  
5-6; Senate Club 7-8; Stu-  
dent Cabinet, Commission-  
er of Building, Playgrounds  
7-8; Student Conference 8;  
Business Manager of Senior  
Play 8.

INA ELKINGTON  
German Club 5-6; Legis-  
lative Assembly 7.



BAKER FERGUSON  
Math Club 2-8; Senior Play  
"Little Women" 8; Chess  
Tournament 4-6-7.

MYRTLE EMLAW



DOROTHY JANE FERNEY  
Science Club 5-8, Secretary  
6; Girls' Council 5.

ETHEL ENGLE  
French Club 5; "Lucky  
Jade" 2; "Singer of Na-  
ples" 4.



KATHLEEN H. FIELD  
Gimmel Teth 2-8; Court 7,  
8; Girls' Federation Cabinet  
3, 8; Girls' Conference 6, 7;  
Legislative Assembly 2, 5;  
Chorus 3-4.

ELLEN EVANS  
Classical Club 2-5.



HARRIET FLAIZ  
Girls' Classical Club 7-8.

**ROBERTA LOU FLEMING**

El Adrea 3-8; Girls' Federation, Cabinet 8; Legislative Assembly 8; Journal Staff 8; Orchestra 1-5; Senior Play "Little Women" 8.



**SHIRLEY GARDNER**

Gimmel Teth 1-8; Girls' Cabinet 1; Chorus 1-2.

**GAIL FOUTS**

W. W. Club 3-8, President 7; Secretary of Student Body 7, 8; Basketball 2-8; Baseball 6, 8.



**LORRAINE GEYER**

National Honor Society 8; Math Club 3-8; "Singer of Naples" 4; Yearbook Staff 8; Transferred from Los Angeles 3.

**LAWRENCE G. FRAZIER**

Ag Club 3-8, Secretary 5-6; Judging Teams: Stock, Potatoes.



**JUANITA GIBSON**

Home Economics Club 8; Chorus 2.

**PAUL FROESE**

F. F. A. 4-8, President 7; Stock Judging 5.



**HOWARD GILLIAM**

W. W. Club 7-8; Aviation Club 7-8; Football 7.

**GLADYS GABLE**

German Club 3-8, President 4.



**FREDA ELSIE GOBLE**

Home Economics 7-8.

MARY GOBLE  
Home Economics Club 7-8.



HERSCHEL N. HADLEY  
Classical Club 3-8, Treasurer  
7, 8; Chess Tournament 5, 6.



HERMAN GOHLMAN  
W. W. Club 4-8; Legislative  
Assembly 5; Football 3, 5,  
7.



BEN HAFNER



MARVIN GOHLMAN  
Senior Class Committee;  
Yearbook.



IRIS HAFNER  
Legislative Assembly 3;  
Journal Staff 8.



EARL DELOSS GREWELL  
Football 4-5; Rifle Team 4.



JACK HALE  
Officers Club 7-8; Second  
Lieut. 7-8; Band 1-8; Pep  
Band 5-8; Junior Class  
President 6; Legislative As-  
sembly 4-6; Student Con-  
ference 8.



GARRETT GWINN  
W. W. Club 5-8;  
Ind. Arts Club 5-7.



DAVID J. HALLMARK  
Military, Second Lieut. 7-8;  
Baseball.



**BETSY HEFFRON**

Transferred from Point Land High, San Diego, Calif.



**FRANCES HOAGLAND**

Gimmel Teth 1, 2; Girls' Federation: Council 2, Cabinet 4; Sponsor Co. A 3.



**CHESTER G. HENDERSON**

Hi-Y Club 6-8; Science Club 6-8; Orchestra 4-8; Pep Band 1-8; Second Lieut. Band 8; Senior Committee, Commencement 8.



**ALEXANDER B. HOFFMAN**



**JOHN HILL**

Officers Club 7-8; Aviation Club 8; Football 4-5; First Lieut. Co. A 8.



**JOHNNY HOLDEREID**

Transferred from Pasco High School 7.



**HELEN LOUISE HILL**

National Honor Society 6-8; Gimmel Teth 1-8, President 7-8; Student Cabinet 7; Student Court 3, 4; Girls' Federation Cabinet 6-8; Sponsor of Co. B 4-6; Vice-President Senior Class 8.



**MILTON DeVERNE HUNNEX**

National Honor Society 7-8; Aviation Club 6-7-8; Legislative Assembly 8; Model Airplane Contest 8; Chemistry Team 6; Chess Tournament 5; Senior Committee, Commencement 8.



**MILDRED HILL**

Legislative Assembly 1; Sponsor Co. A 7.



**WESLEY HUNTER**

Ag Club 1-8; Legislative Assembly 3, 4.



BETTY HOITT

Transferred from Miss Catlin's School for Girls, Portland, 5.



WILLIAM JACKSON

Transferred from Mac-Hi 7.



NINA ELIZABETH HURST

Transferred from St. Vincent 3.



MELVIN JACOBS

Equites Club 6-8; Orchestra 1-2.



REGINA BELLE IMLAY

Gimmel Teth 1-8, Vice-Pres. 8; Girls' Federation Tri-State Conference 5; Yearbook Staff 8.



DOLORES JENKINS



ETHEL E. INDER

Home Economics Club 7-8.



ELLIS N. JOHNSON

Officers Club 7-9; Commercial Art Club 5-6, Sec-Treas. 5, 6; Junior Mechanics Club 7, 8, Treasurer 7, 8; Second Lieut. Co. B 7, First Lieut. Co. B 8, Captain Co. B 9.



ETHEL MAE JACKSON

Gimmel Teth 5-8.



JOHN E. JOHNSON

Ind. Arts Club.



JUNE JOHNSON

El Adrea 1-2; Gimmel Teth 5-8, Secretary 8; Dramatic Club 1; Legislative Assembly 1, 2.



GILMORE KIRKMAN

Hi-Y 3-8; Classical Club 3-8, President 5, 6.

MARY F. JOHNSON

Home Economics Club 8.



MYRTLE KLEIN

MARY N. JOHNSON

National Honor Society 8; Girls' Classical Club 5-8; President 5; Science Club; 3-4; Girls' Federation, Sec. of Council 5-6; Senior Play, "Little Women" 8.



CHARLES KRAINING

Officers Club 6-8; Junior Mechanics 6-8, President 7; Industrial Arts Club 5-6, Vice-Pres. 6; Stage Crew 7-8; Captain Adjutant 7-8.

EVELYN MAE JONES

Junior Mechanics Club 5-8, Vice-President 6.



JAMES LAMAN

W. W. Club 3-8; Football 3-5-7; Basketball 4-6-8; Track 4-6-8.

JEWEL KENNEDY

National Honor Society 7-8; Girls' Classical Club 3-8; Legislative Assembly 3, 4.



DOROTHY LANE

National Honor Society 7-8; Girls' Classical Club 4; Social Science Club 5-6; Chorus 5.

ROBERT E. LATHROP

Tennis Club 7-8, Vice-President 7.



HARRY LOCKHART

W. W. Club 3-8; Senate Club 3-8; Hi-Y 1-2; Cabinet 7-8; Student Conference Debate 7; Legislative Assembly 5-6; Basketball 3-8.

DOROTHY LEEPER

Science Club 1-2; Dramatic Club 1-7; Chorus 1, 2, 3, 4, 6, 7.



JAMES LOFTHUS

Equites Club 6-9, President 8-9; Science Club 3-5; Vice-President 5; Legislative Assembly 1, 3, 5, 8; Band 1, 3, 5, 7; Orchestra 7; Chorus 1-4; Operetta 1, 3, 5.

CLARA LEICHER



VIRGINIA LONG

Transferred from Waitsburg High School 7.

DORIS LORRAINE LEONARD

Art Club 7-8.



WILLIAM H. MARGERUM

Officers Club 6-8; Non-Com Club 7-8; Mechanical Arts Club 1; Aviation Club 6-8; Major 8.

DOROTHY LIEB

Transferred from Ellensburg 6; Gimmel Teth 8.



DOROTHY MARSHALL

German Club 5-6.

**FLORENCE MARTIN**

National Honor Society 6-8; Gimmel Teth 1-8, Secretary 6; Classical Club 2; Student Offices: Chief Justice of Court 7-8; Girls' Federation, Cabinet 5-7, Secretary 7; "Torch Bearers" 5; Senior Play "Little Women" 8.



MARY McBEE

**CHESTER MATTHEWS**

Dramatic Club 5-8; Baseball 6-8; Journal Staff 7-8.



DOROTHY M. McBETH  
Legislative Assembly 5;  
Sponsor Co. A 5, 6.

**MARYBELLE MATTHEWS**

El Adrea 7-8; Legislative Assembly 1; Senior Committee 7.



TYRUS McFADDEN  
Aviation Club 5-8.

**HELEN MARTHA MAXSON**  
Math Club 6-8.



REX EARL McFARLAND  
Ag Club 1-2; Legislative Assembly 1.

**MONTANA MAYLAND**

Entered from Great Falls, Montana, 5; National Honor Society 7-8; Gimmel Teth 5-8, Secretary 7; Girls' Cabinet 6-8; Girls' Council 6-8; Legislative Assembly 6; Journal Staff 7-8.



RUTH M. McKINNEY  
National Honor Society 6-8, Vice-President 7; El Adrea 1-8; Legislative Assembly 8; Chemistry Team 8; "Shirt Sleeves" 7; Senior Play, "Little Women" 8.



**DOROTHY H. McNAMARA**  
Girls' Cabinet 7.



**AVONELL MONEY**

National Honor Society 6-8;  
Classical Club 4-5; El Adrea  
6-8; Student Cabinet 7-8;  
Legislative Assembly 1, 3;  
Pullman Conference 8.

**ELSIE MEINERS**

National Honor Society 7-8;  
El Adrea 1-8, Vice-President  
7, Secretary 8; Girls' Cab-  
inet 8; Legislative Assembly  
7; Sponsor Co. D 5, 8; Spon-  
sor of Battalion 6; Girls'  
Conference 6.



**JACK MONEY**

President Student Body 7-8;  
Hi-Y 3-8, President 6;  
Math Club 3-8, Vice-Pres.  
5, 6; Legislative Assembly 2,  
4, 6, 8; Student Conference  
7; Eh Kah Nam 6, 8; "What  
Do You Think" 6; Band and  
Orchestra 1-8; Northwest  
Band 8.

**CONSTANCE MILLER**

Entered from North Central  
3; El Adrea 4-8; Dramatic  
Club 3; Journal Staff 8;  
Girls' Cabinet 4.



**JEAN MORRISON**

National Honor Society 6-8;  
Gimmel Teth 1-8, Treasurer  
4, Vice-President 6; Vice-  
President Student Body 7-8;  
Girls' Cabinet 5-6; Legis-  
lative Assembly 2, 5, 6, 7,  
8; Sponsor Co. D 3; Battal-  
ion Sponsor 4; Student Con-  
ference Delegate 7.

**HALFORD MILLER**

F. F. A. 1-8; Vice-Presi-  
dent 7-8, Treasurer 5-6; Po-  
tato Judging Team 5.

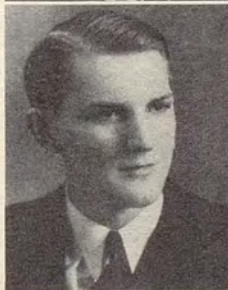


**JUNE MORRISON**

Gimmel Teth 1-8, Treas. 5;  
Pres. of Girls' Federation 8;  
Vice-President 7; Legislative  
Assembly 1, 3; Student Court  
3, 4; Sponsor Band 5, 6.

**HUBERT MILLER**

Entered from Laramie, Wy-  
oming 7.



**ABBIE MOSNER**

French Club 5-7; Home Eco-  
nomics Club 8.

HOWARD EDWIN MULLEN

Math Club 7-8; Industrial Arts 1-3-5; Wa-Hi Amateur Radio Club 7-8; Band 2-8.



KATHRYN ODELL

National Honor Society 6-8; El Adrea 4-8; Girls' Federation Cabinet 6; Sponsor Co. B 8.



VIVIAN NAIMY

Dramatic Club 2-8, Vice-President 8; Girls' Federation Council 6-8; Legislative Assembly 6.



JACK PENNER

W. W. Club 5-8; Football 5-7.



CYRUS R. NELSON

Ag Club 5-8; Stock Judging Team 7.



HAROLD PERKINS

Officers' Club 4-7, Capt. 6, 7; Rifle Team 4-7.



PATRICK NELSON

W. W. Club 3-8; Dramatic Club 7-8; Cabinet, Com. of Publicity 7-8; Football 1-3-5-7; Track 2-4-8; Tennis 8; Journal Business Manager 8; Senior Committee 8.



CLEMENTINE PERRON

Home Economics Club 8.



HARRY NESLIN

W. W. Club 3-8; Senate Club 5-8; Football 3-5-7.



KERMIT PETERSON

Hi-Y 6-8; Math Club 5-8.



CHARLES W. PETRIE, Jr.  
Senate Club 7-8.



JOHN RANTALA  
Transferred from Albuquerque, New Mexico H. S. 5; Junior Mechanics 5-6; Aviation Club 7-8.

LEWIS PICKARD  
Industrial Arts 1-4; Dramatic Club 5-8; Legislative Assembly 6.



DORRIS M. REED  
National Honor Society 6-8; Secretary 7; Math Club 3-8, Sec.-Treas. 5; Legislative Assembly 6; "What Do You Think" 6; Yearbook Staff, Literary Editor 8; Chemistry Team 8; Senior Commencement 8.

LARRY PORTER  
W. W. Club 3-8, President 7-8; Senate Club, President 8, Vice-Pres. 7, Secretary 5; Basketball 4-6-8, Captain 4; Track 6-8.



SCOUT H. REED  
Hi-Y 3-8, Treasurer 7, Secretary 8; Science Club 3-8, Treasurer 5; "Little Women" 8; Chemistry Team 6; Senior Committee Play Selection 8; Legislative Assembly 2, 3, 5, 6, 7.

ROBERT PUTNAM  
Transferred from Helena, Mont. 5; Math Club 6-8; Journal Staff 8.



EARL RICHARDS  
Transferred from Scatton, Neb. 7.

FRANCES QUIGLEY  
Tennis Club 4; French Club 6-8; Chorus, accompanist 8.



EUGENE ROBISON  
Equites 5-8, Vice-President 8, Treasurer 5-7; Legislative Assembly 1, 2, 4, 8; Football 6-7; Track 8; Senior Committee Engraving 8.

FOREST ROFF  
Intramural Athletics.



RUDOLPH SCHATZEL  
Sgt.-Major 7.



BUD ROGERS  
Senate Club 5-8, Pres. 8.



NELLIE A. SCHAUB  
National Honor Society 7-8;  
Dramatic Club 4-8.



FRANK JOSEPH ROHMER  
Transferred from University  
High Los Angeles, Calif. 8;  
Tennis 8; Track 8.



KARL SCHNEIDMILLER  
W. W. Club 5-8; Football  
1-3-5-7, Captain 7; Most in-  
spirational player 7; Base-  
ball 6-8.



BANFORD RUSSELL  
Officers Club 8; Aviation  
Club 5-8, Secretary 7; Vice-  
President 8; Second Lieut.  
8; Rifle Team 8.



GLADYS SCHOESSLER



GENEVIEVE RUSSELL  
Dramatic Club 2-7, Secre-  
tary 3; Senior Play "Little  
Women" 8; Eh Kah Nam  
6-8.



ALEX SCHREINER  
Social Science Club 7; Sen-  
ior Committee Commence-  
ment 8.



**BERNICE SCHULER**  
Home Economics Club 8.



**C. CECIL SMITH**  
Math Club 6-7; Junior Me-  
chanics Club 4-5.



**ROBERT SCOTT**  
Senate Club 4-8; Classical  
Club 1-3-4, Secretary-Treas.  
4; Second Lieut. Co. A 7;  
Senior Committees, Frolic  
Chairman 8; Tennis 6-8.



**NORMAN SMITH**  
Officers Club 7-8; Aviation  
Club 6-7; Captain 7-8.



**IBBIE L. SHELTON**  
Social Science Club 6-7;  
Home Economics Club 8.



**NAYDENE SMUCKAL**  
Science Club 5-6; Chorus 1-  
8.



**BYRON SHIRROD**



**RALPH W. SMUCKAL**  
Junior Mechanics 7; Orches-  
tra 6-7; Pep Band 4-7.



**WALTER W. SHUHAM**  
Math Club 5-8, Vice-Presi-  
dent 7; Science Club 3;  
Student Body Offices: Court  
3, 4, 7, 8, Legislative As-  
sembly 3, 5, 7, 8; Second  
Lieut. Co. A 7; Journal Staff  
News Editor 8; Senior Com-  
mittee, Senior Play Cos-  
tumes 8, Announcements 7.



**GEORGE STANDAGE**  
Pep Band 8.



**EARL STANFIELD**

Hi-Y 5-8, President 7; Math Club 5-8, Vice-President 6; Sophomore Class Vice-President 3; Senior Class President 7-8; Yearbook Staff, Business Manager 8.



**CHARLES J. TASH**

Social Science Club, Secretary 5, President 6; Legislative Assembly 5; "What Do You Think" 6, Business Manager 6; Operetta 4; Senior Play "Little Women" 8.

**HOWARD STANTON**

Hi-Y 6-8; Science Club 4-8.



**ESTHER M. TAYLOR**

Social Science Club 5-7, President 7.

**ROBERT STEMMER**

Junior Mechanics Club.



**JEANNE TAYLOR**

Transferred from Pullman 3; National Honor Society 6-8; Social Science Club 5-8, Secretary 7, President 8; Chemistry Team 8; Senior Committee Choosing Senior Play 7; Yearbook Staff 8.

**HOWARD STOCKTON**

Science Club 7-8; Band 1-8; Pep Band 7-8; Orchestra 7-8.



**WANDA TEAL**

Transferred from Camas, Wash. 3.

**MURRAY E. TAGGART**

Hi-Y 5-8; Student Body Court 1, 2; Senior Class Vice-Pres. 7; Legislative Assembly 3-4; "What Do You Think" 6; Senior Play "Little Women" 8; Captain 6-7; Eh Kah Nam 6.



**BILLY THOMAS**

Officer's Club 5-8, Major 9.

STANLEY THOMAS

Science Club 3-8; President 5-6; Legislative Assembly 1-2; Track 6-8.



GILBERT TONER

Science Club 5-8.

EVELYN TINDALL

National Honor Society 7-8; Girls' Classical Club 5-8.



JOHN TOOKER

National Honor Society 6-8, Vice-President 8; Hi-Y 5-8, Secretary 7; Math Club 2-8, President 7; Legislative Assembly 8; Editor Journal 8; "Torchbearers" 8; "What Do You Think" 6; Chemistry Team 6.

ROBERT W. TINDALL

Officers Club 7-8; Science Club 3-6; Legislative Assembly 1, 6, 7, 8; Track 6, 8; Manager 8; Captain R. O. T. C. 7-8.



JOHN MARTIN TUKE

Track 8.

JULIUS TOLTON

Science Club 4-8; Journal Staff 8; Track 5-7-9.



NORMA LILLE UNRUH

Entered from Hutchinson, Kansas 5; German Club 5-6; Science Club 7-8; Sponsor Co. A 8; Senior Committee, Commencement 8.

MARY ANNA TOMPKINS

Science Club 1-7; Chorus 1-2; Senior Committee, Senior Play 8.



KATHLYN VOGEL

Math Club 5-8, Sec.-Treas. 7; Legislative Assembly 2, 3, 5, 7; Senior Play "Little Women" 8; Sponsor Second Battalion 7; Sponsor First Battalion 8; Yearbook Staff, Assistant Literary Editor 8; Play Committee 7.

JAMES VRATTOS



DORA WEAVER  
Home Economics Club 7-8;  
Yearbook Staff 8.



ROSE D. WAGNER  
German Club 5-8, President  
8.



NINA BONITA WEBER



NADINE WALKER  
Home Economics Club 8;  
Sec'y for Coach Dimick  
7-8; Legislative Assembly 1.



LLOYD WELLS  
Dramatic Club 2-8; Military,  
Second Lieut. Co. D 7.



GORDON WALTERS  
Aviation Club 6-8, Vice-  
Pres. 7, Secretary 8; Officers  
Club 7-8; Military, Second  
Lieut. Co. D 7; First Lieut.  
Co. D 8.



HELEN WHITE  
Dramatic Club 6-8.



RUTH WASSER  
National Honor Society 6-  
8; Math Club 3-8, Secre-  
tary-Treasurer 6; Chemistry  
Team 8.



LUCRETIA WHITE  
Math Club 7-8; Transferred  
from St. Patrick's 5.





WALTER WICKERT  
Radio Club 7-8.



DELBERT A. WOLFE  
Rifle Team 7; Chorus 8.



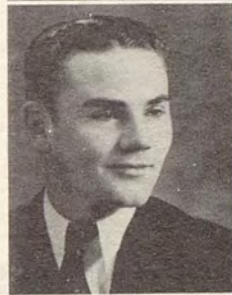
ROBERTA B. WIDENER  
Girls Classical Club 5-8.



BONNIE JEANNE WRIGHT  
National Honor Society 8;  
El Adrea 5-8; Classical Club  
3-4; Girls' Federation Council  
3, 4; Legislative Assembly  
4, 5, 7.



GLEN WILLIAMS



CLARA M. WRIGHT  
Girls' Classical Club 5-8.



DOROTHY E. WINKLE



JOHN P. YENNEY  
Ag Club 1-8, President 7;  
Captain Co. D 8; Rifle Team  
4-6-8; Judging Teams 5-6-7-  
8, Stock, Potatoes.



MARGARET WITTRICK  
Girls' Classical Club 5.



HANNAH ZIER  
Girl Reserve.



CLARA CURRENT

FRANCES DICKERSON

GLEN FRAZIER

F. F. A. 1-6.

NORVAL HANCOCK

BOB HUSEL

DICK KEYES

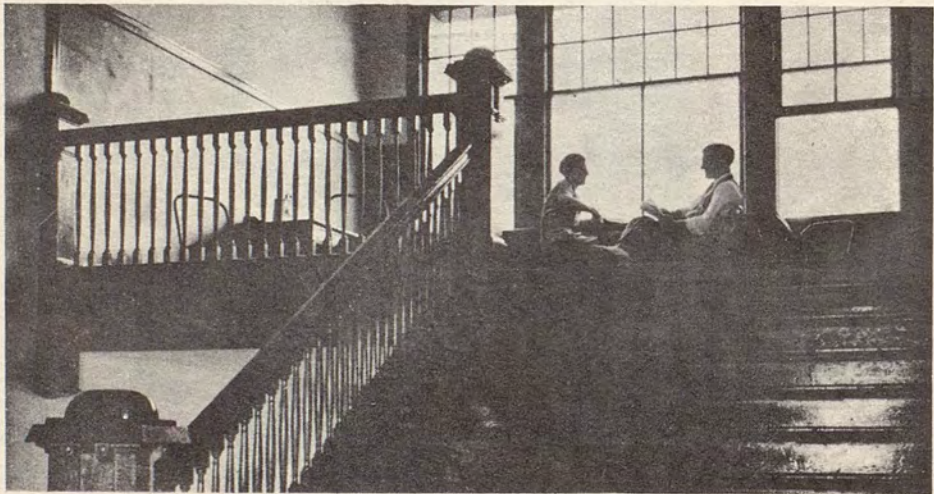
DONALD McLEOD

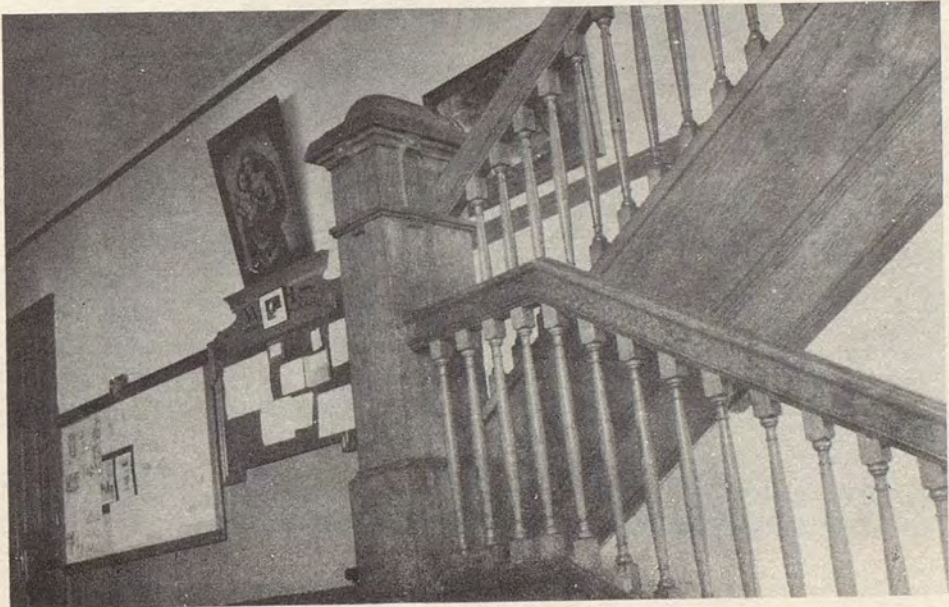
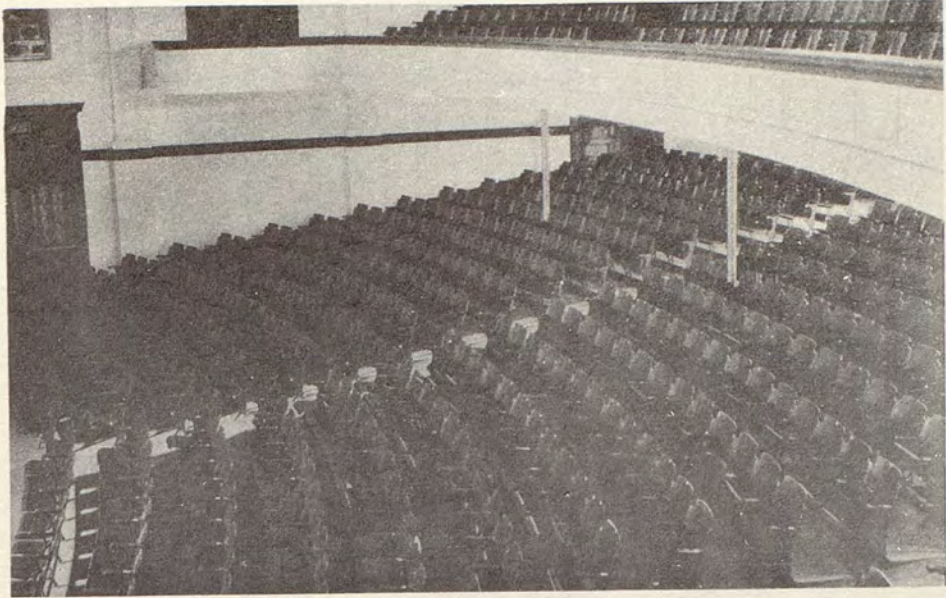
W. W. Club 5-8; Senate  
Club 5-8; Football 1, 3, 5,  
7.

DELWARD REED

PHILIP TROUSDALE

ELLSWORTH WHITMAN



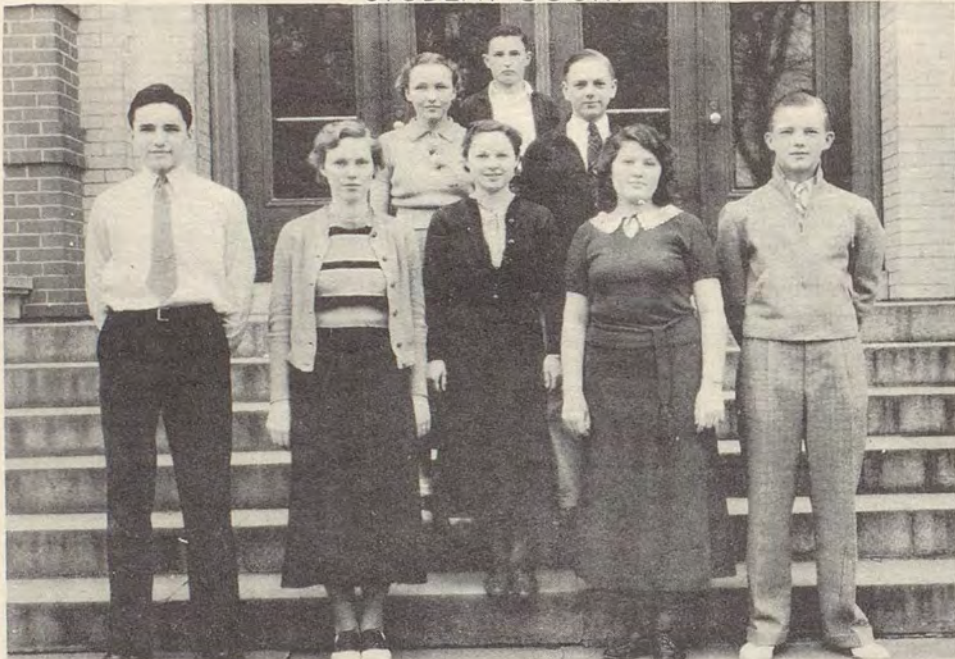


## STUDENT CABINET



Back row—Fouts, Kelley, Hale    Second row—Driftmeyer, Nelson, Lockhart, Fausti  
Front row—Martin, Coleman, Money (Pres.), Morrison (Vice-Pres.), Hill, A. Money

## STUDENT COURT



Back row—Baker, Clodius, Drumheller.  
Front row—Shuham, Field, Martin (Chief Justice), Rogers, Kenyon.

## GIRLS' FEDERATION OFFICERS



Back row—Church, Williams, Bayne, Martin  
Front row—Morrison, Casey

| First Semester       |                     | Second Semester  |  |
|----------------------|---------------------|------------------|--|
| Lucile Casey.....    | President.....      | June Morrison    |  |
| June Morrison.....   | Vice-President..... | Dorothy Williams |  |
| Florence Martin..... | Secretary.....      | Shirley Baker    |  |
| Jean Church.....     | Treasurer.....      | Ellen Bayne      |  |

## NATIONAL HONOR SOCIETY

Left to right—Argo, Bury, Bingman, Bontrop, Geyer, Lane, Money, Taylor, Campbell, Hill, Martin, Morrison, Tindall, Church, Hunnex, Mayland, Odell, Tooker, Coleman, Johnston, McKinney, Wasser, Cookerly, Kennedy, Meiners, Schaub, Wright.



## YEAR BOOK STAFF



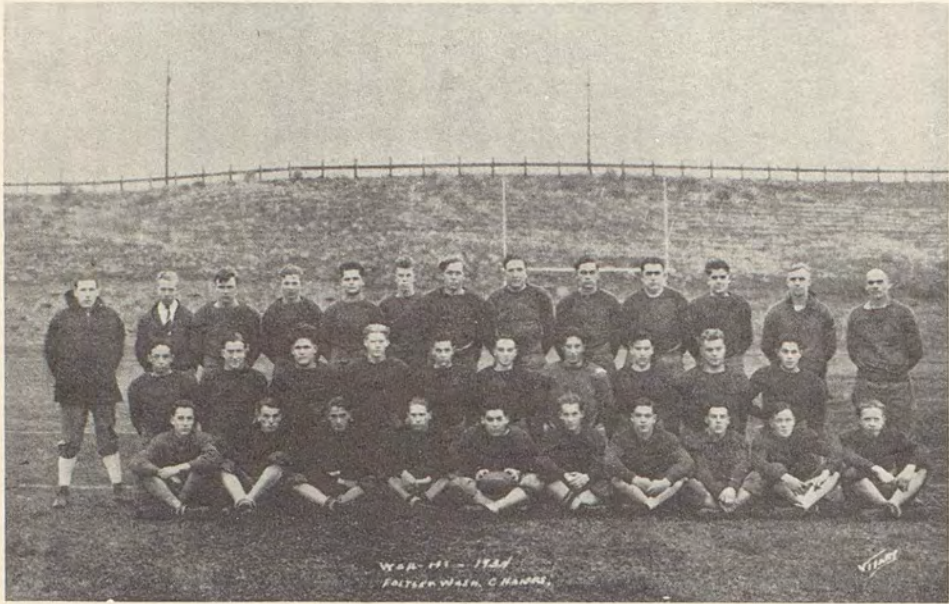
Back row—Reed, Casey, Eagleson, Imlay, Vogel  
Front row—Crawford, Stanfield, Hill, Argo, Reed

## JOURNAL STAFF



Editor, John Tooker; Asst. Editor, Alice Hair; News Editor, Walt Shuham; Sports Editor, Dick Hendricks; Business Mgrs., Bob Tindall, Pat Nelson; Asst. Sports Editor, Chet Mathews; Asst. Business Mgr., Robert Putnam; Circulations and Exchanges, Bob Putnam and Bob Fletcher; Typists, Jeanne Taylor and Lucretia White.

## FOOTBALL



Back row—Jacky, Thomas, Nelson, Miller, Linker, Gilliam, Leone, Laman, Blackman, Gohlman, Robison, Anderson, Dimick.  
 Middle row—Schneidmiller, Bishop, Penner, M. Grange, Martin, Cushman, Dummler, Cochran.  
 Front row—Pickard, McDaniels, Schaefer, Stiles, Nelson, Gettman, Van Donge, Merkle, Stewart, G. Grange

Wa-Hi's football team did exceptionally well this year, losing only one game out of nine engagements. The climax of the football season came with the Thanksgiving Day game when the Blue Devils conquered Yakima to the tune of 16 to 13. In the closing minutes of the game the engineering and execution of a field goal by Schneidmiller aided by the fine support of his teammates saved the day for Wa-Hi.



## BASKETBALL



Back row—Onstot, Blackman, Laman, Fouts, Bastron.  
Front row—Zier, Miller, Lockhart.

The way the Blue Devils waded through their scheduled games and the district tournament gave everyone high hopes of Wa-Hi's retaining the state basketball championship for another year, but at the state tournament a combination of hard luck and tough opponents put them out of the running at the start. Laman was in the infirmary for the duration of the meet, weakening the team appreciably. The fact that Wa-Hi placed eighth at the state tournament makes it all the more remarkable that two members of the team, Gail Fouts and Harry Lockhart, should have been chosen for All-State honors.

## BASEBALL



Back row—Joe Colombo, Chester Matthews, Bob Shaw, Gail Fouts, Bardell Van Donge, Dale Gentry, Coach Paul Anderson.  
Front row—George Gwinn, Eugene Driftmeyer, Remo Fausti, Karl Schneidmiller, Floyd Hayes, Grant Stiles

Wa-Hi's 1935 baseball team has won all its games to date. According to Coach "Polly" Anderson, the team this year is a more clever ball club than that of last year, but they are not such heavy hitters. An interesting feature of the team is the size of the infield, it being no larger than that of the average grade school.

## TRACK TEAM

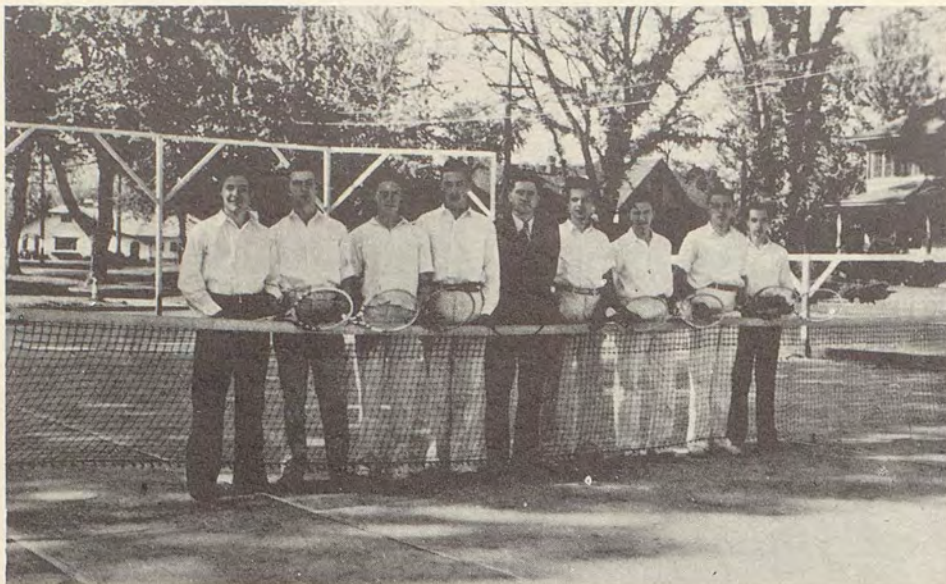


Back row—Coach Lawrence Jacky, Nelson, Blackman, Linker, Laman, Robison, Thomas, Kennedy.  
 Middle row—Miller, Zier, Bryant, Knapp, Jacobs, Argo, Bethman.  
 Front row—B. Zier, Gensel, Tolton, Benefiel, Chambers, Gradwohl, Berner.

The track assignment for the 1935 season was given to Lawrence Jacky with the instructions to make it one of the major sports of Wa-Hi. March 26, 45 boys answered the first call and started preparing diligently for the season's schedule.

The team has shown marked improvement and one new record, a 122 feet 10½ inch discus throw by Tom Blackman has been made. "Swede" Miller, Harry Zier and Jim Laman have also been consistent first place winners in their respective events.

## TENNIS TEAM



Left to right—Keith Griffiths, Bob Scott, David Bryant, David McCarrroll, Coach Marvin Minzel, Gilmore Kirkman, LaSalle LeRoux, Harry Lockhart, Bob Vollendorff.

The tennis team, a recent addition to Varsity athletics, has been handicapped by a lack of courts on which to practice. The players to date, have dropped matches with Yakima and Pendleton but they are expected to be considerably improved by the time of the return matches with these schools. The team lacks experience, LeRoux being the only Varsity man from last year. About a week before each meet, the team is chosen, the choice being the members highest on the tennis ladder and thus the best player can work up to the top. Harry Lockhart, David Bryant, and Gilmore Kirkman are the graduating seniors who are in the upper bracket on the ladder. The prospects for next year's tennis are very bright as there is a crop of promising underclassmen turning out.

## OFFICERS AND SPONSORS OF THE R. O. T. C.

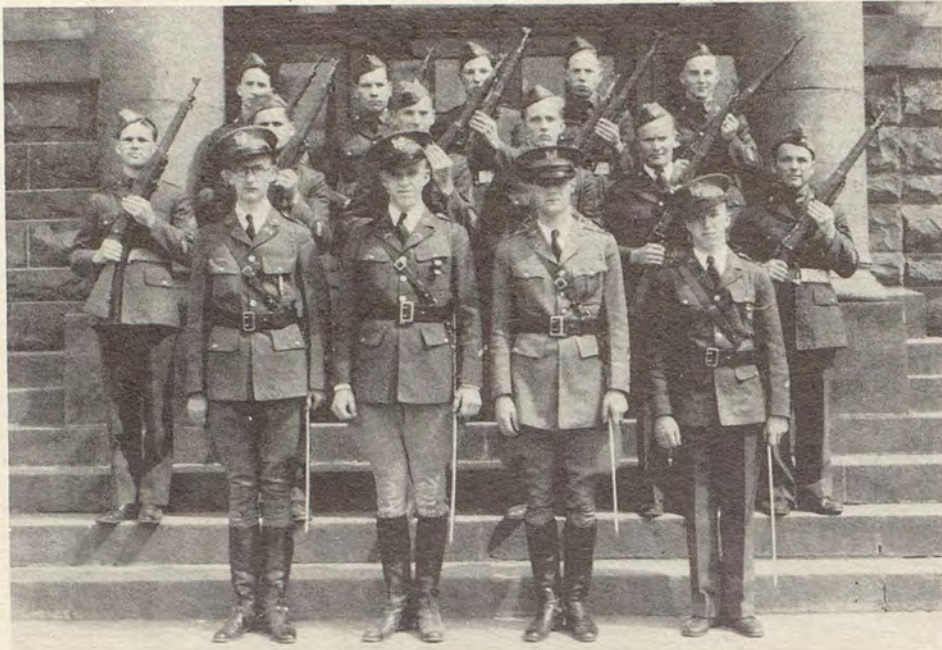


Back row—Brother, Russell, Walters, Tyler.  
Third row—Hallmark, Henderson, Eagleson, Loney, Owens, Smith, Tindall, Kelley, Bishop, Hill, Rantala.  
Second row—Meiners, Yenney, Unruh, Bethman, Stevens, Kraining, Deare, Dessen, Odell, Johnson, Casey, Baker.  
Front row—Capt. Erickson, Vogel, Reed, Harding, Dickey, Hallmark, Esmieu.



WA-HI R. O. T. C. BAND

## RIFLE TEAM



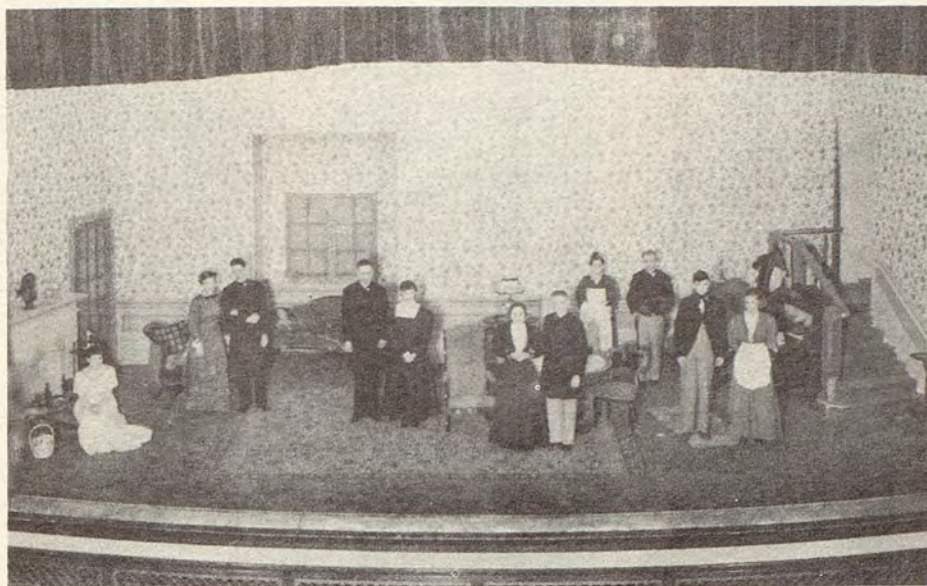
Back row—G. Campbell, G. Gwinn, L. Cauvel, R. Moore, A. Matthews.  
 Middle row—C. Johnson, H. Linker, G. Parsons, H. Miller, A. Mills, F. Hayes.  
 Front row—J. Bethman, J. Rantala, J. Yenney, B. Russell

## STOCK JUDGING TEAM



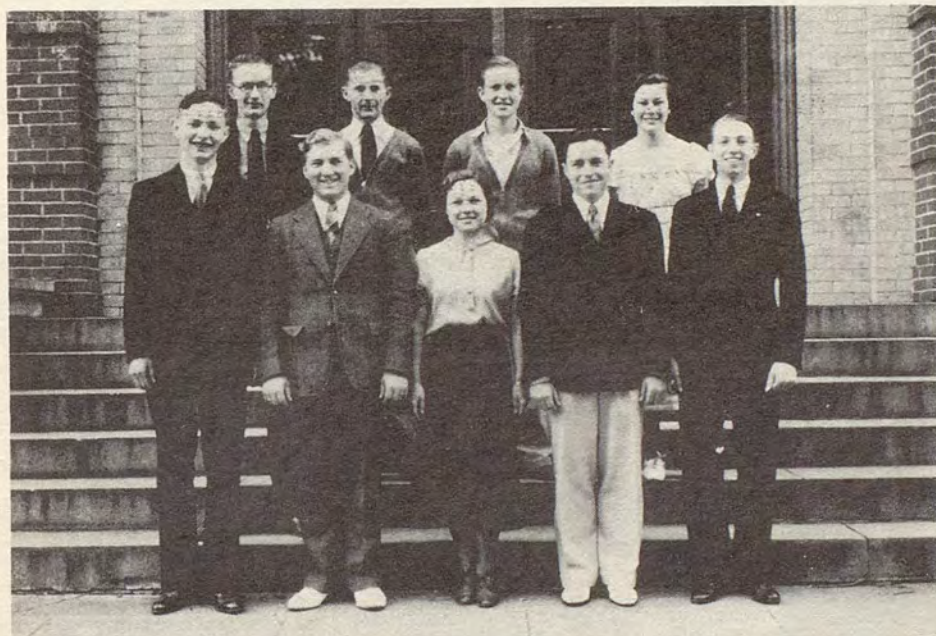
Back row—Lybecker, Coach; Nelson, Hopper, Schmidt.  
 Front row—Frazier, Rea, Yenney.

## SENIOR PLAY "LITTLE WOMEN"

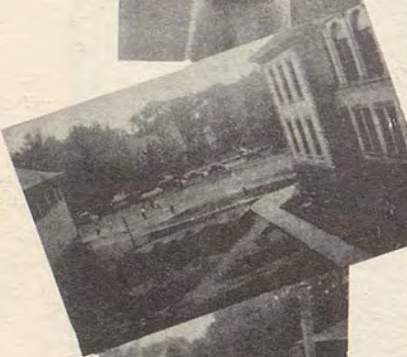


McKinney, Cookerly, Taggart, Bethman, Fleming, Martin, Reed, Russell, Tash, Ferguson, Johnson

## EXTEMPORANEOUS AND EH KAH NAM CONTESTS

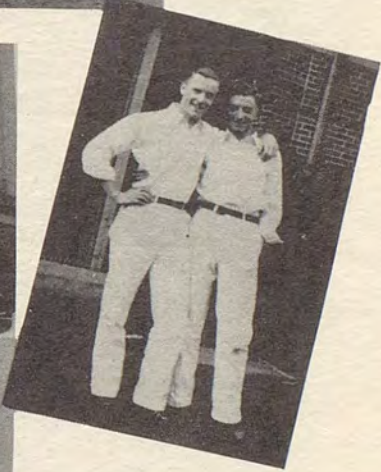


Back row—Bethman, Schmidt, Cameron, McKinney.  
Front row—McCarroll, Money, Martin, Clodius, Kellough.





# BLUE



## THE GANG

|                    |                      |                   |
|--------------------|----------------------|-------------------|
| Betty Koitt        | Genevieve Russell    | Richard Blodgett  |
| Jack Morley        | Jean Morrison        | Ray Castron       |
| Walter Shubert     | Rubert Miller        | Howard Billings   |
| Jemo Faust         | John Tuhe            | Franklin Kline    |
| Blouence Martin    | Morgan Spelman       | Honold Bechel     |
| Chester Henderson  | John Johnson         | Scour Reed        |
| Mary F. Johnson    | Howard R. Stockton   | James Loftus      |
| Bob Scott          | Howard Stanton       | James W. Benefel  |
| Frances Hoagland   | Leonard Bury         | Robert H. Tindall |
| Norma Lilla Amuh   | Robert Putnam        | Howard Cameron    |
| Virginia Long      | Earl Stanfield       | Artima Bergoin    |
| Rhenta Fleming     | Martin Buchanan      | Earl D. Jewell    |
| George H. Standage | Jake Benzel          | Ruth Wasser       |
| Roberta Widener    | Edith Mae Jackson    | Evelyn Tindall    |
| Gene Wagner        | Bernice Longman      | Janet Chase       |
| Dorothy Winkle     | Frances Ziegler      | Betsy Haffron     |
| Idie Shelton       | Nadine Walker        | Charles Kraining  |
| Shirley Gardner    | Bonnie Jeanne Wright | Alvin Adcock      |
| Bertha Springer    | Clementine Pearson   | Lucile Gray       |
| Margaret Billings  | Abbie Moore          | Ether Tyler       |
| Myrtle Emlaw       | Suzette H. Lita      | Carl Richards     |
| Harold V. Argo     | Connie Miller        | Camilla Dotson    |
| Donald Cushman     | Suzene Robison       | Ellen Evans       |
| Marguerite Adams   | Advert Toner         | Clare Current     |
| Herschel Hadley    | Dorothy Jane Fernoy  | Charles Davis     |
| Murray Taggart     | Lawrence Brothier    | Francis Dickerson |
| Dorothy Lane       | James Laman          | Norval Hancock    |
| Tom Blackman       | Charles Detwiler Jr. | Myrtle Klein      |
| Helen White        | Alexander Hoffman    | Clara Lechner     |
| Melvine Buchanan   | Dorothy Mc Namara    | Mary Mc Bee       |
| Handa Aden         | Karl Schmidmiller    | Donald McLeod     |
| Marguerite Deuk    | Lawrence Frazier     | Hermit Peterson   |
| Donald Hill        | Walter R. Wickert    | Phil Truetsdale   |
| Silmore Hokenan    | Helen Louise Hill    | James Vratto      |
| Gordon Walters     | Gloyd S. Welle       | Ellsworth Whitman |
| Stanley Thomas     | Nesley Hunter        | Hannah Zier       |
| Jane Morrison      | Bob Stemmer          | Harriet Olais     |
| Myrtle Maxwell     | Ina Edkington        | Gladys Gable      |
| Mary Ann Tompkins  | Edna Alexander       | Holow's Jenkins   |
| John D. Zennery    | Ethel Engle          | Bernice Schuler   |

## THE GANG

|                     |                  |                   |
|---------------------|------------------|-------------------|
| Régina Belle, DmLay | John R. Tanker   | Martha Crawford   |
| Earl Smith          | Al Johnson       | Janita Bissler    |
| Emelye Berg Jones   | Dana Coleman     | Lydia Lee Buthaus |
| Harold Perkins      | Helen Matson     | Mary Juntrop      |
| Harry Lockhart      | Delbert Wolfe    | Hena Baltesore    |
| Jim Hafner          | Rudolph Schatzel | Mildred Bybee     |
| Betty Arny Allen    | Forest Poff      | Montana Mayland   |
| Mary Goble          | Lorraine Meyer   | Jewel Kennedy     |
| Worsham Smith       | Janne Taylor     | Dorrie Campbell   |
| Milton D. Heinnes   | Levi S. Richard  | Clara Wright      |
| Ed Ma Tasland       | Ray B. Johnson   | Wanda Stal        |
| Cyrus Nelson        | Anna S. Weber    | Dorothy Marshall  |
| John J. Bohman      | Dolly Leiper     | Ethel Sander      |
| Kathryn Vogel       | Edip S. Soper    | Ethel Engle       |
| Quith M. Finney     | Byron Hirod      | Kathryn Odell     |
| Kay Field           | Dorothy Lieb     | Freda Noble       |
| Harry Heslin        | June Jalmsen     | Johnny Halperid   |
| Nardene Smuckel     | Grayel Baer      | Sam L. Williams   |
| M. Madeline Gokeny  | Holland Daniels  | Jack Penner       |
| Helma Averill       | Frank J. Bohmer  | Bill Jackson      |
| John Hill           | Judy Casseday    | Quora Mowry       |
| Ben Hafner          | Dorothy Deke     | Mildred Hill      |
| Merwin Sahlman      | Bob Dickey       | Dorothy Carilton  |
| Chit Matthews       | Garrett Gudim    | Dorothy           |
| Melvin Jacobs       | Vivian Naimy     | David Hallmark    |
| Dorothy Mae Boak    | Nellie Schaub    | Margaret Wittrock |
| Jim Eagleson        | Banford Russell  | Margie Bristol    |
| Blaise Meiness      | Agne Durzen      | John Kantala      |
| Baker Ferguson      | Julius Olton     | Larry Porter      |
| Tyrus McFadden      | Ruf Rogers       | Hena Hunt         |
| Dora Weaver         | Shirley Baker    | Bob Baker         |
| Engene Driftmeyer   | William Daviey   | Ellis Johnson     |
| Lewis Bishop        | Dore Leonard     | Bob Lathrop       |
| Makine Cyle         | Ralph Smuckel    | Juanita Gibson    |
| Florence Barn       | Bill Thomas      | Dorothy McBeck    |
| Blaine Bishop       | Allan Brough     | Delward Reed      |
| Jean Church         | Bill Creek       | Jack Tash         |
| Gail Foute          | Patrick Nelson   | Bill Margerum     |
| Halford Miller      | Paul Froese      | Bob Husel         |
| Jack Hale           | Glen Frazier     | Howard Mullen     |
| Maria Cundiff       |                  |                   |

Printing and Lithography  
by  
INLAND PRINTING COMPANY  
Walla Walla, Washington

Photography  
by  
VITART STUDIO  
Walla Walla, Washington

